



## DILEMMA

**STAR TREK**  
THE NEXT GENERATION



## ARMUS — SKIN OF EVIL

A malevolent being was formed when the inhabitants of Vogra II rid themselves of all the evil they had inside.

Kills one Away Team member (random selection). Discard dilemma.

1 V

NOT ENDORSED BY CBS OR PARAMOUNT PICTURES



## DILEMMA

**STAR TREK**  
THE NEXT GENERATION



## BIRTH OF "JUNIOR"

Large infant spaceborne life-form. Attached itself to the U.S.S. Enterprise in 2368, sucking energy from the ship.

Place on ship. End of each turn, RANGE reduced by 1; if reduced to 0, ship destroyed. Nullify with 3 ENGINEER.

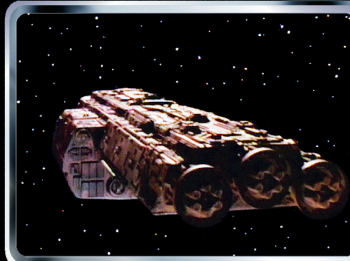
2 V

NOT ENDORSED BY CBS OR PARAMOUNT PICTURES



## DILEMMA

**STAR TREK**  
THE NEXT GENERATION



## RADIOACTIVE GARBAGE SCOW

Barges containing dangerous waste can be adrift for centuries. One such barge threatened Gamelon V in 2367.

Place on spaceline here. Mission cannot be attempted where present. Ship with Tractor Beam and 2 ENGINEER can tow scow.

3 V

NOT ENDORSED BY CBS OR PARAMOUNT PICTURES



## DILEMMA

**STAR TREK**  
THE NEXT GENERATION



## THE ARSENAL: DIVIDED

While confronting the Echo Papa 607 weapons system, Geordi La Forge ordered a saucer separation to protect the ship's crew. He took command of the stardrive section.

Divide your unique crew members into two face-down piles. One pile is "stopped" (opponent's choice). To get past, ship must be staffed and have INTEGRITY>27 remaining.

4 V

NOT ENDORSED BY CBS OR PARAMOUNT PICTURES



## DILEMMA

**STAR TREK**  
THE NEXT GENERATION



## THE ARSENAL: SEPARATED

While investigating the Arsenal of Freedom on Mimos, a sudden attack separated the crew of the Enterprise.

Divide your unique personnel into two face-down piles. One pile is "stopped" (opponent's choice). To get past requires CUNNING>27 remaining.

5 V

NOT ENDORSED BY CBS OR PARAMOUNT PICTURES



## DILEMMA

**STAR TREK**  
THE NEXT GENERATION



## 3 TOPOLOGICAL ANOMALY 4747

Invasive program created in 2368 by Data and Geordi La Forge to cause the total system failure of the Borg Collective.

Borg and personnel, androids, and one ENGINEER here (random selection) are placed in stasis. Cure on your next turn with new SCIENCE arriving or when countdown expires.

6 V

NOT ENDORSED BY CBS OR PARAMOUNT PICTURES



## DILEMMA

**STAR TREK**  
THE NEXT GENERATION



3

## VIRUS

Ancient Iconian computer programs transmitted to the U.S.S. Yamato, U.S.S. Enterprise, and Haakona attempted to overwrite the ships' computer systems.

Unless you have 4 Computer Skill present, place on ship. This ship, and all your other ships of the same class, are attributes all -2. Cure with 6 Computer Skill.

7 V

NOT ENDORSED BY CBS OR PARAMOUNT PICTURES



## DILEMMA

**STAR TREK**  
THE NEXT GENERATION



## WIND DANCER

Sentry of the Parallax Colony. Only allows those whose hearts are joyous to pass.

To get past, Lwaxana Troi must be present OR at least one Away Team member must have: Youth OR Music OR STRENGTH>9.

8 V

NOT ENDORSED BY CBS OR PARAMOUNT PICTURES



## DOORWAY

**STAR TREK**  
THE NEXT GENERATION



## ALTERNATE UNIVERSE DOOR

Place one on table during the seed phase. Door is now open, allowing your icon cards to enter play.  
OR Stock in deck and use as follows:  
Plays to nullify one Revolving Door or Subspace Schism. (Discard doorway.) OR Allows one ship to pass through Q-Net. (Discard doorway.) OR Nullify one Temporal Rift, and return doorway to your hand.

9 V

NOT ENDORSED BY CBS OR PARAMOUNT PICTURES



# EVENT

STAR TREK  
THE NEXT GENERATION



## SURPRISE PARTY

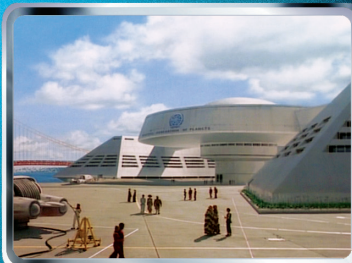
Planning Lt. Worf's party was easy; translating "For He's a Jolly Good Fellow" into Klingon was hard. There didn't seem to be a Klingon word for "jolly."

Plays on table. Your opponent may immediately draw up to two cards. At the end of each of your turns, you may draw an extra card. (Unique.)

10 V



Federation Outpost STAR TREK  
THE NEXT GENERATION



Earth is a member of the United Federation of Planets. The Federation establishes outposts throughout its territory.

Seed one OR build where you have a Federation ENGINEER.



OUTPOST

SHIELDS 30

11 V



Ferengi Trading Post STAR TREK  
THE NEXT GENERATION



Ferengi commercial centers are frequented by many races for trade, information, repair and resupply.

Seed one (you may also seed one ♠ D'Kara face up here) OR build where you have a Ferengi ENGINEER. Each player's non-Borg cards may report and mix aboard regardless of affiliation.



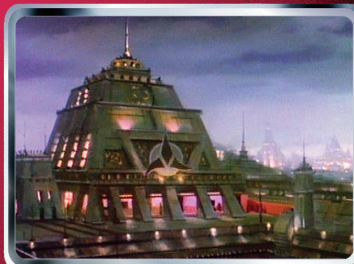
OUTPOST

SHIELDS 24

12 V



Klingon Outpost STAR TREK  
THE NEXT GENERATION



The Klingon Homeworld is Qo'noS. The Klingon Empire establishes outposts throughout its territory.

Seed one OR build where you have a Klingon ENGINEER.



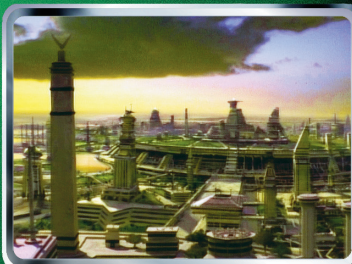
OUTPOST

SHIELDS 32

13 V



Romulan Outpost STAR TREK  
THE NEXT GENERATION



Romulus is one of the two homeworlds for the Romulans. The Romulan Star Empire establishes outposts throughout its territory.

Seed one OR build where you have a Romulan ENGINEER.



OUTPOST

SHIELDS 32

14 V

2



Atmospheric Ionization may seed here.

## Botanical Research

Unexplored planet: Gather plant life for medical research from planet with highly ionized atmosphere.

SCIENCE + MEDICAL + CUNNING>35  
Atmospheric Ionization may seed here.





**Jean-Luc Picard** *STAR TREK THE NEXT GENERATION*



NOT ENDORSED BY CBS OR PARAMOUNT PICTURES

**OFFICER**

Rescued Borg counterpart. After returning to his command of the *U.S.S. Enterprise*, Picard developed a violent vendetta against the Borg.

Leadership x2 Archaeology Navigation  
While on your ship, WEAPONS and SHIELDS +4 against

INTEGRITY 8 CUNNING 8 STRENGTH 7

19 V

**Robert DeSoto** *STAR TREK THE NEXT GENERATION*



NOT ENDORSED BY CBS OR PARAMOUNT PICTURES

**OFFICER**

Captain of the *U.S.S. Hood* and former commanding officer of William T. Riker. Years ago, he and Jean-Luc Picard served together as lieutenants on the same ship.

If on *U.S.S. Hood*, your compatible V.I.P.s may report aboard. Leadership Honor Exobiology

INTEGRITY 8 CUNNING 7 STRENGTH 5

20 V

**Shelby** *STAR TREK THE NEXT GENERATION*



NOT ENDORSED BY CBS OR PARAMOUNT PICTURES

**OFFICER**

Lt. Commander Shelby is an ambitious Starfleet officer. Assigned to the *U.S.S. Enterprise* as a specialist on the Borg.

Leadership Exobiology

INTEGRITY 6 CUNNING 7 STRENGTH 4

21 V

**Sito Jaxa** *STAR TREK THE NEXT GENERATION*



NOT ENDORSED BY CBS OR PARAMOUNT PICTURES

**SECURITY**

Ensign Sito Jaxa, a Bajoran, is one of a number of navigation officers aboard the *U.S.S. Enterprise*.

Navigation Youth

INTEGRITY 8 CUNNING 6 STRENGTH 6

22 V

**Spock** *STAR TREK THE NEXT GENERATION*



NOT ENDORSED BY CBS OR PARAMOUNT PICTURES

**V.I.P.**

½ Vulcan, ½ Human son of Sarek and Amanda Grayson. Over 140-year-old ambassador. On private mission to Romulus. Mindmelded with Picard.

Diplomacy x2 Computer Skill Leadership  
SCIENCE Mindmeld

INTEGRITY 9 CUNNING 10 STRENGTH 7

23 V

**Tasha Yar-Alternate** *STAR TREK THE NEXT GENERATION*



NOT ENDORSED BY CBS OR PARAMOUNT PICTURES

**SECURITY**

Traveled to 2344 and helped prevent a disastrous war. Survivor of the Battle of Narendra III. Consort of Romulan general. Mother of Sela.

Honor Leadership  
Starfleet Type II Phaser

INTEGRITY 8 CUNNING 7 STRENGTH 8

24 V

**Worf** *STAR TREK THE NEXT GENERATION*



NOT ENDORSED BY CBS OR PARAMOUNT PICTURES

**SECURITY**

Lieutenant Worf is chief of security on the *U.S.S. Enterprise*. Klingon warrior and Starfleet officer. Son of Mogh. Raised on Earth by foster parents.

Honor x2 Navigation Diplomacy

INTEGRITY 8 CUNNING 6 STRENGTH 10

25 V

**Dr. Reyga** *STAR TREK THE NEXT GENERATION*



NOT ENDORSED BY CBS OR PARAMOUNT PICTURES

**SCIENCE**

Invited aboard the *U.S.S. Enterprise* to demonstrate his innovative technology. The ensuing murder mystery proved it successful, but at a high cost.

ENGINEER Astrophysics Physics  
Stellar Cartography Metaphasic Shields

INTEGRITY 7 CUNNING 8 STRENGTH 5

26 V

**Duras** *STAR TREK THE NEXT GENERATION*



NOT ENDORSED BY CBS OR PARAMOUNT PICTURES

**V.I.P.**

Son of a traitor, Ja'rod, and a traitor himself. Member of the Klingon High Council.

Treachery x2 Leadership Law Diplomacy  
Computer Skill Once each turn, may kill an opponent's personnel here that just completed a mission.

INTEGRITY 2 CUNNING 7 STRENGTH 9

27 V





Gowron

STAR TREK  
THE NEXT GENERATION

NOT ENDORSED BY CBS OR PARAMOUNT PICTURES

V.I.P.

Son of M'Rel. Leader of the Klingon High Council after defeating the Duras forces in the Klingon Civil War of 2367-68.

Leadership x2 • Diplomacy • Honor

INTEGRITY 8 CUNNING 7 STRENGTH 9

28 V



K'Temoc

STAR TREK  
THE NEXT GENERATION

NOT ENDORSED BY CBS OR PARAMOUNT PICTURES

OFFICER

Captain of the sleeper ship *I.K.S. T'Pol*, on a crucial mission ordered by the High Command in the late 23rd century. Awoke 75 years later in a much-changed galaxy.

• Astrophysics • Transporter Skill • Geology  
▼ Engage Cloak

INTEGRITY 6 CUNNING 7 STRENGTH 8

29 V



Kargan

STAR TREK  
THE NEXT GENERATION

NOT ENDORSED BY CBS OR PARAMOUNT PICTURES

OFFICER

Captain of the *I.K.S. Pagh* when Commander William T. Riker served as an exchange officer.

• Honor • Computer Skill

INTEGRITY 7 CUNNING 5 STRENGTH 9

30 V



Kurak

STAR TREK  
THE NEXT GENERATION

NOT ENDORSED BY CBS OR PARAMOUNT PICTURES

SCIENCE

Famed female Klingon scientist and warp-field specialist who evaluated the metaphasic shield.

• Astrophysics • Computer Skill • Physics  
• Honor

INTEGRITY 6 CUNNING 7 STRENGTH 6

31 V



Vekma

STAR TREK  
THE NEXT GENERATION

NOT ENDORSED BY CBS OR PARAMOUNT PICTURES

MEDICAL

Klingon female trained in Klingon anatomy and medicine. Propositioned Commander William T. Riker on the *I.K.S. Pagh* in 2365.

• Honor

INTEGRITY 6 CUNNING 5 STRENGTH 6

32 V



Baran

STAR TREK  
THE NEXT GENERATION

NOT ENDORSED BY CBS OR PARAMOUNT PICTURES

OFFICER

Male captain of a mercenary ship raiding archaeological sites to find the Stone of Gol.

• Greed • Archaeology • Exobiology  
• Computer Skill

INTEGRITY 3 CUNNING 8 STRENGTH 6

33 V



Jo'Bril

STAR TREK  
THE NEXT GENERATION

NOT ENDORSED BY CBS OR PARAMOUNT PICTURES

SCIENCE

Tokaran male. Attempted to steal Dr. Reygo's metaphasic shield technology to claim as his own.

• Treachery • Astrophysics • Physics  
• Greed

INTEGRITY 3 CUNNING 8 STRENGTH 7

34 V



Sunad

STAR TREK  
THE NEXT GENERATION

NOT ENDORSED BY CBS OR PARAMOUNT PICTURES

OFFICER

Typical Zalkonian captain. Sought to capture criminals undergoing a dangerous mutation before they could further disrupt society.

• SECURITY • Leadership • Physics  
• Law

INTEGRITY 5 CUNNING 8 STRENGTH 6

35 V



Tallera

STAR TREK  
THE NEXT GENERATION

NOT ENDORSED BY CBS OR PARAMOUNT PICTURES

SECURITY

Female Romulan mercenary. In reality a physically altered Vulcan isolationist seeking the Stone of Gol.

Does not work with other affiliation personnel.

• Computer Skill • SCIENCE • Mindmeld  
• Leadership • Treachery

INTEGRITY 3 CUNNING 7 STRENGTH 7

36 V



**Vektor**

**STAR TREK**  
THE NEXT GENERATION

**SCIENCE**

Representative of female mercenaries operating throughout the galaxy. Worked with Baran to find the Stone of Gol.

MEDICAL

Navigation

Geology

**INTEGRITY** 2

**CUNNING** 7

**STRENGTH** 6

37 V

**U.S.S. Drake**

**STAR TREK**  
THE NEXT GENERATION

**WAMBUNDU CLASS**

Starfleet vessel, registry NCC-20381. In 2364, was assigned a routine mission of exploration in and around the Lorenze Cluster under the command of Paul Rice.

**Holodeck, Tractor Beam**

**RANGE** 7

**WEAPONS** 8

**SHIELDS** 7

38 V

**U.S.S. Enterprise**

**STAR TREK**  
THE NEXT GENERATION

**GALAXY CLASS**

Encountered the *U.S.S. Enterprise-C* in an alternate reality. Became the *Future Enterprise* in an alternate future. Visited by crew from the *Starship Enterprise*.

**Holodeck, Tractor Beam**

Wall of Ships

**RANGE** 8

**WEAPONS** 7

**SHIELDS** 9

39 V

**U.S.S. Oberth**

**STAR TREK**  
THE NEXT GENERATION

**OBERTH CLASS**

Class of small ships often used for scientific missions. Named for 20th century rocket scientist Hermann Oberth.

**Tractor Beam**

**RANGE** 6

**WEAPONS** 4

**SHIELDS** 7

40 V

**D'Kora Transport**

**STAR TREK**  
THE NEXT GENERATION

**D'KORA-CLASS TRANSPORT**

Ferengi trade vessel. Same spacelike as the *D'Kora*-class marauder, but has a smaller crew complement and devotes far more internal volume to cargo capacity.

**Tractor Beam**

**RANGE** 7

**WEAPONS** 5

**SHIELDS** 7

41 V

**I.K.S. Bortas**

**STAR TREK**  
THE NEXT GENERATION

**VOR'CHA CLASS**

Flagship commanded by Gowron during the Klingon Civil War of 2367-68. Lieutenant Worf briefly served aboard as a weapons officer.

**Cloaking Device, Tractor Beam**

**RANGE** 9

**WEAPONS** 9

**SHIELDS** 7

42 V

**I.K.S. K'Vort**

**STAR TREK**  
THE NEXT GENERATION

**K'VORT CLASS**

Class of ships identical in configuration to the classic B'rel class Klingon Bird-of-Prey, although much larger.

**Cloaking Device, Tractor Beam**

**RANGE** 8

**WEAPONS** 6

**SHIELDS** 6

43 V

**Mercenary Ship**

**STAR TREK**  
THE NEXT GENERATION

**UNKNOWN CLASS**

Little-known ship. Difficult to track due to a unique hull design that renders it invisible to long-range scans. Baran captained one in 2370.

**Long-Range Scan Shielding**

**RANGE** 7

**WEAPONS** 7

**SHIELDS** 7

44 V

**Science Vessel**

**STAR TREK**  
THE NEXT GENERATION

**SCIENCE CLASS**

Specialized science ship used for an Interphase Generator experiment in 2368.

**RANGE** 8

**WEAPONS** 5

**SHIELDS** 6

45 V